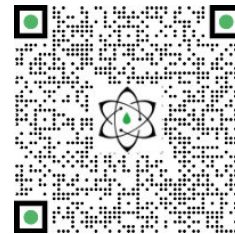




## RAPPORT TECHNIQUE

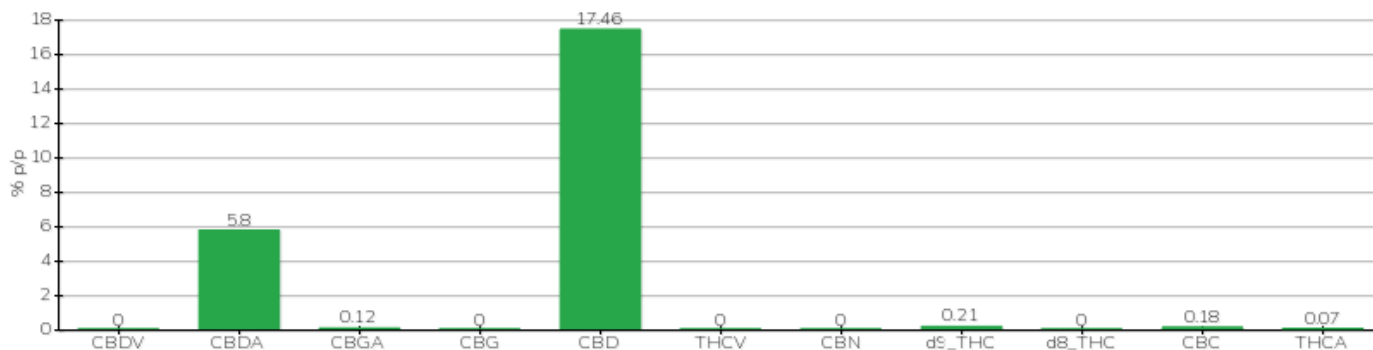
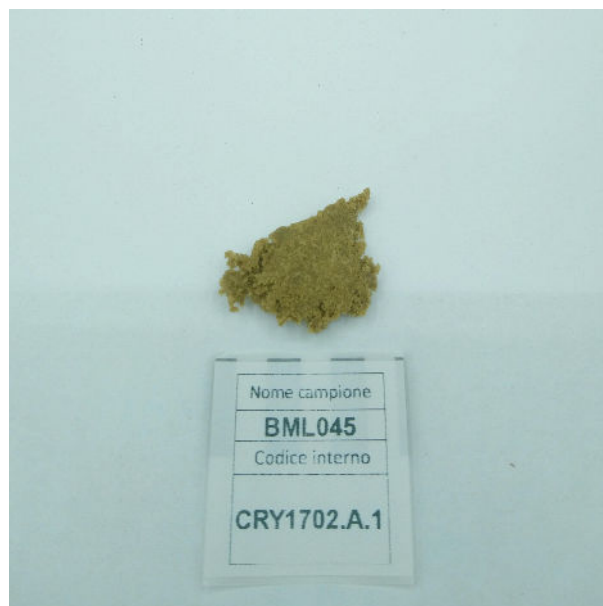


<b>Client</b>	Crystal srl	<b>Étiquette</b>	BML045
<b>Date d'acceptation</b>	17/02/2023	<b>Échantillon type</b>	biomasse
<b>Date d'analyse</b>	17/02/2023	<b>variété</b>	Élire Bell
<b>Code de référence interne</b>	CRY1702.A.1	<b>Aucun tag</b>	M0164520200002
<b>Méthode analytique</b>	HPLC - HS - Rév.2	<b>Échantillonnage</b>	par le client
<b>Parcelle</b>			

### Note

Paramètre	% p/p	Méthode
CBDV	<0,01%	HPLC-UV
CBDA	5,80%	HPLC-UV
CBGA	0,12%	HPLC-UV
CBG	<0,01%	HPLC-UV
CBD	17,46%	HPLC-UV
THCV	<0,01%	HPLC-UV
CNB	<0,01%	HPLC-UV
d9_THC	0,21%	HPLC-UV
d8_THC	<0,01%	HPLC-UV
Radio-Canada	0,18%	HPLC-UV
THCA	0,07%	HPLC-UV
<b>CBD TOTAL</b>	<b>22,55%</b>	<b>CALCULÉ</b>
<b>CBG TOTAL</b>	<b>0,11%</b>	<b>CALCULÉ</b>
<b>THC TOTAL</b>	<b>0,27%</b>	<b>CALCULÉ</b>

ÉCHANTILLON ANALYSE : Eletta Campana (3,00gr)



Pinède

21/02/2023